



# PRICE LIST 2024 STANDING MATS WORKPLACE MATS

*From 240801*



# MATTING

WORKPLACE MATS	Standing mats	Roll / metre goods / module	Side
<b>SHOP / PUBLIC ENVIRONMENT / OFFICE</b>	StandUp AIR		8
	StandUp BRICK		9
	StandUp CIRCLE		10
	StandUp CORK		11
	StandUp EASY CLEAN		12
	StandUp ORIGINAL		13
		YOGA DECK	19
	YOGA DECK ZEDLAN	YOGA DECK ZEDLAN	20
	YOGA FASHION		14
	YOGA FASHION NITRIL		15
	YOGA FLEX	YOGA FLEX module	31
		YOGA METER	22
	YOGA PUR		16
		YOGA SIGNAL	22
	YOGA STEP ZEDLAN	YOGA STEP ZEDLAN	24
		YOGA SUPER	25
	YOGA SUPER PLUS	YOGA SUPER PLUS	25
		YOGA TAILOR NITRIL	27
		YOGA TAILOR STEP	28
		YOGA WEARBOND	30
	StandUp ACTIVE balance board	37	
	StandUp ACTIVE balance mat	37	
	HOOKS & STORAGE	38	
<b>INDUSTRY</b>	StandUp AIR		8
	COMFORT FLOW		17
	YOGA BUBBLE		21
	YOGA COMFORT		18
		YOGA DECK	19
	YOGA DECK ZEDLAN	YOGA DECK ZEDLAN	20
	YOGA FASHION NITRIL		15
	YOGA FLEX	YOGA FLEX module	31
	YOGA FLEX INDUSTRY	YOGA FLEX INDUSTRY module	32
		YOGA METER	22
		YOGA RETAIL	23
		YOGA SIGNAL	22
		YOGA SOLID module	36
		YOGA SOLID EXTRA module	34
	YOGA STEP ZEDLAN	YOGA STEP ZEDLAN	24
		YOGA SUPER	25
	YOGA SUPER PLUS	YOGA SUPER PLUS	25
		YOGA TAILOR NITRIL	26
		YOGA TAILOR PYR	27
		YOGA TAILOR STEP	28
	YOGA TEX	29	
	YOGA TUFF module	35	
	YOGA TUFF EXTRA module	33	
	YOGA WEARBOND	30	
<b>FOOD HANDLING</b>	COMFORT FLOW		17
	YOGA COMFORT		18
	YOGA FLEX INDUSTRY	YOGA FLEX INDUSTRY module	32
		YOGA SOLID EXTRA module	34
	YOGA TUFF EXTRA module	33	
<b>MATIX</b>	Environmental facts		39
<b>CHOOSE THE RIGHT MAT</b>	Which mat should I choose?		40

# Matting AB

## Responsible design



### LCA - Life Cycle Analysis

Matting uses life cycle assessment as an important tool in our early design process and product development phase. This is to make decisions based on the most accurate data we can to achieve the greatest and most far-reaching effects on longevity and reduced climate impact in the product's journey from cradle to cradle. If you want to know more about our work with LCA, you are welcome to contact us. Products with a completed life cycle assessment have this symbol.



### EPD - Environmental Product Declaration

In parallel with LCA, there are EPDs based on the international standard ISO 14025. EPDs are third-party verified environmental declarations for products and consist of a PCR (product category rule) and an LCA. Products with an EPD have this symbol.

### Circular

For us, developing products equals great responsibility and creating new opportunities for future generations. In addition to innovative design, we focus on ensuring that our products can be easily reused for a long life over and over again with minimal waste. That the products have spare parts and can be easily repaired when long use has taken its toll on certain components. This symbol means that the product has replaceable parts for a long life and/or that we can offer service/services for updating/reusing the product.



Matting strives to reduce the proportion of virgin materials and minimise the use of raw materials. We therefore choose to use recycled materials in our products whenever possible. This symbol also indicates when a product contains at least 20% recycled material.



### PVC-free

This symbol indicates that the product is PVC-free.

*Our range is continuously being developed throughout the year. Therefore, feel free to ask us for our latest new products or about projects involving our full range or unique customer-specific solutions.*

*Prices are subject to change, E&OE.*

## Our vision

Matting's vision is to create well-being to prevent fatigue and encourage creative people. Matting offers various solutions that create healthy workplaces and accessible environments. We aim to contribute towards a better world by always being aring, innovative, committed, proud and genuine.

## Our story

Matting is a family-owned niche company. Matting AB was established in 1970 by Jon Botha and has become the Nordic region's leading supplier of high-quality ergonomic mats. During the last 10 years, Matting has invested in its own product development and developed strong concepts such as StandUp.

Through our expertise, commitment and cutting-edge product development, we offer sustainable concepts and products for public spaces, workplaces and schools. Our concepts are developed in close collaboration with designers and experts, with a clear focus on sustainability and sustainable people.

We are very intentional about using local production for as many of our products as possible, to reduce unnecessary transport and environmental impact, promote local labour and use natural, non-toxic materials

Matting focuses on two main areas with concepts for a healthy workplace and active study environment and concepts with products and services for accessible, sustainable and safe environments.

## StandUp & stay active - wherever you are

Our StandUp range is designed for the workplace of the future. Home offices, co-working spaces and activity-based or flexible offices. Yes, quite simply - wherever you are - no matter where your workplace is. All based on our passion to develop solutions that promote well-being and increased mobility.



## Our designers

*Dan Ihreborn* was born in Sweden in 1952 and has worked as a freelance designer since 1991. He works with modern furniture design and specialises in office environments as an interior designer. With his 45 years in the industry, Dan has extensive experience and understands how furniture has changed over the years.

*Peter Mattisson* comes from Borås. He began his professional career back in the 1970s, starting out at age 16 years as a trainee decorator. Since then, Peter has been active in the fashion industry and has worked in both fashion and interior design. He has worked as a designer since 2004 and, since 2015, has been running his own design agency, Peter Mathisson desig.



## Next Generation

Matting works actively to reduce the impact on future generations and on our environment. We have begun work to analyse the life-cycle of our products and to create circularity in our processes and products. To help our customers make sustainable environmental choices, we also calculate our products' climate impact.

Through all stages of production, we demand compliance with our Code of Conduct, and that products conform to the REACH regulation; we always strive to manufacture wooden products sustainably. We work on the basis of maintaining the highest quality requirements for our products. That's why we choose to have several of our products tested and certified by independent institutes such as Möbelfakta and OEKO-TEX.

Matting has been environmentally certified to conform to the ISO 14001 standard since 2001.

In our never-ending commitment to reducing our climate footprint and making it easier for our customers to live up to their environmental requirements, Matting has initiated the "LESS WASTE" packaging project. It is about reducing the number of packages as much as possible and reducing waste for the customer. Reducing packaging volume also reduces weight and emissions in transit.

Matting always ensures that our products meet the requirements of the REACH Regulation, which restricts the use of hazardous substances. Our lighting is CE marked and meets the requirements of the RoHS Directive. Matting fulfils the producer responsibility for recycling of electronics (WEEE) in accordance with Ordinance SFS 2014:1075.



## ISO Certification

Matting AB has an environmental management system certified to ISO 14001:2015 and a quality management system certified to ISO 9001:2015



## Collaboration with El-kretsen

Under regulation SFS 2014:1075 and the regulation on producer responsibility for batteries SFS 2008:834, we cooperate with Elkretsen AB in respect of producer responsibility for electrical and electronic products. Your used products can be left at the nearest recycling centre or collection point. For further information about the nearest reception station, visit: [www.el-kretsen.se](http://www.el-kretsen.se)

## Sorting at source

Matting AB has a detailed recycling programme where we sort everything from household waste to wooden pallets.

## Packaging materials

Packaging material is a significant, environmental impact factor in Matting's operations. In general, paper and packaging materials are made in Sweden in accordance with standards set by the Swedish Paper Industry Work Environment Council (PIA). All outer packaging used by Matting comes from 100% recycled paper. The packaging also bears the RESU label, a European label approved for European dimensions.



## Member of the NPA register

Matting AB is affiliated to the NPA, <https://npa.se/> (formerly FTI). We pay packaging fees and thereby fulfil our producer responsibility for the recycling of packaging.

## Warranty

Our products must be of high quality, must be designed to function in a circular process, and must be durable. That's why we have a 5-year guarantee on our desks, storage furniture and the NEOS range. The rest of our range is backed by at least a 2-year manufacturing and production warranty. The warranty covers production and manufacturing defects. This does not cover normal wear and tear, damage or poor maintenance. The warranty period starts from the invoice date.

## Prices

All prices are exclusive of VAT and shipping. We reserve the right, without prior notice, to make price adjustments resulting from changes in commodity prices, exchange rates, clerical errors or other circumstances beyond the control of Matting AB.

## Small order charge

We apply a small order charge of SEK 200 for net orders less than SEK 500.

## Terms and conditions of payment

Usually 30 days' credit up to an agreed limit following approved credit checks. Matting AB reserves the right to change the credit limit at any time and without notice. In the event of late payment, interest will be charged on arrears and, where applicable, a fee for collection and the payment order.

## Delivery time

Delivery time on stocked standard products:

Orders are shipped from Matting's warehouse the next working day, unless the customer requests otherwise.

Delivery time for stocked products that require cutting, trimming or other customisation is 4-8 days.

Delivery times for non-stocked on-demand products vary and are given as per a Separate delivery notification.

## Shipping

Shipping costs are additional. Order delivered free ex-Mattings warehouse Alingsås. We deliver domestic shipments by DHL, unless otherwise agreed. Any free shipping limit is calculated in relation to the order value of the stocked range separately and the on-demand range separately, as simultaneous delivery dates are not possible. Packaging costs as of 1 July 2022.

Packaging costs invoiced in connection with deliveries on pallets:

EUR pallet: 22,50 €\*

Disposable pallet, full: 12,50 €

Disposable pallet, half: 10 €

Pallet collar: 12,50 €

Pallet packaging: 12,50 €

Mounting cost Effective/Jaguar: 30 € per square metre.

*\*Does not apply to customers who are members of DHL's pallet pool*

## **Complaints and returns**

Each return and unit must be individually approved by Matting AB. For help, please contact us at [info@matting.se](mailto:info@matting.se) or on tel. +46 322 670800.

## **Information concerning return possibilities for batteries, electrical and electronic products:**

In accordance with the Ordinance on producer responsibility for electrical and electronic products (SFS 2014:1075) and the Ordinance on producer responsibility for batteries (SFS 2008:834), Matting AB offers to receive used products free of charge to ensure that the product is recycled or processed in an environmentally acceptable manner. The used product can be handed in to:

**Matting AB**  
**Tomasgårdsvägen 19**  
**SE-441 39 Alingsås**  
**Sweden**

*Any costs incurred in connection with the return transport of the product are not refunded.*



H 19  
W 770 / 990  
D 530



**AIR standing mat**

StandUp AIR is an ergonomic, high-quality standing mat with a wipeable nitrile top surface, 20% of which is recycled. A workplace mat with a nitrile rubber underside. Bevelled edge. Eyelet for hanging on the smaller mat. Phthalate-free.

- Environment:* Shop, public environment, office, heavy/light industry, welding.
- Property:* Very soft, cushioning and relieving.
- Material:* Nitrile rubber, foamed nitrile rubber.
- Thickness:* 19 mm
- Oil resistance:* Long exposure.
- Guarantee:* 5 year

Dimensions (mm)	Color	Art. no	Price
770 x 530 x 19	Black	381995	160
990 x 530 x 19	Black	381891	212

Options	Color	Art. no	Price
HOOK desk hook	Metal	382015	15



Black







H 16  
W 780  
D 540

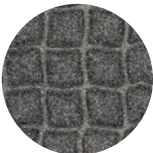
**BRICK standing mat**

StandUp BRICK is a PVC-free TPE standing mat made from consistently sustainable materials. A workplace mat with a textile surface in recycled PET. Underside made of nitrile. Eyelet for hanging.

*Environment:* Shop, public environment, office.  
*Property:* Soft, cushioning.  
*Material:* Top PET fibre, bottom nitrile rubber.  
*Thickness:* 16 mm  
*Guarantee:* 2 year

Dimensions (mm)	Color	Art. no	Price
780 x 540 x 16	Grey	381982	102

Options	Color	Art. no	Price
HOOK desk hook	Metal	382015	15



Grey





H 20  
W 770  
D 530



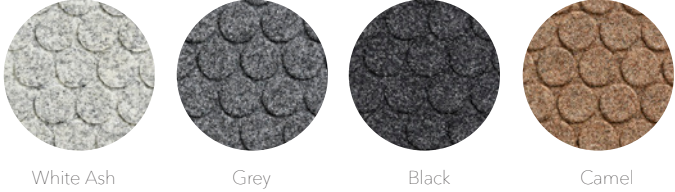
**CIRCLE standing mat**

StandUp CIRCLE is a PVC-free high quality, ergonomically relieving standing mat. Textile surface in recycled PET. The surface layer is durable and dirt-resistant. Underside made of polyurethane Eyelet for suspension. Bevelled edge. Phthalate-free. Design Peter Mattisson.

*Environment:* Shop, public environment, office.  
*Property:* Extra soft, cushioning.  
*Material:* Top PET fibre, bottom and core foamed polyurethane (PU).  
*Thickness:* 20 mm  
*Guarantee:* 5 year

Dimensions (mm)	Color	Art. no	Price
770 x 530 x 20	White Ash	381987	149
770 x 530 x 20	Grey	381988	149
770 x 530 x 20	Black	381989	149
770 x 530 x 20	Camel	381986	149

Options	Color	Art. no	Price
HOOK desk hook	Metal	382015	15





H 22  
W 770  
D 530

**CORK standing mat**

StandUp CORK is a PVC-free, vegan premium standing mat that is ergonomic and relieving. Desk mat in foamed polyurethane with a surface layer of planed cork with leather detail. Eyelet for hanging. Bevelled edge. Phthalate-free

*Environment:* Shop, public environment, office.  
*Property:* Soft, cushioning with high comfort and design.  
*Material:* Top cork, bottom foamed polyurethane.  
*Thickness:* 22 mm  
*Guarantee:* 5 year

Dimensions (mm)	Color	Art. no	Price
770 x 530 x 22	Cork	381996	156

Options	Color	Art. no	Price
HOOK desk hook	Metal	382015	15



Cork





**EASY CLEAN standing mat**

StandUp EASY CLEAN is a PVC-free ergonomic and relieving standing mat made of PUR. The mat has a wipeable and easy-to-maintain PU surface layer. Bevelled edge. Eyelet for hanging. Phthalate-free.

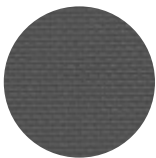
- Environment:* Shop, public environment, office.
- Property:* Extra soft, cushioning.
- Material:* Top made of PU leather material, bottom foamed polyurethane.
- Thickness:* 18 and 22 mm
- Guarantee:* 2 year

H 18  
W 600  
D 520

H 22  
W 770  
D 530

Dimensions (mm)	Color	Art. no	Price
600 x 520 x 18	Grey	381998	81
770 x 530 x 22	Grey	381999	94

Options	Color	Art. no	Price
HOOK desk hook	Metal	382015	15



Grey





H 20  
W 770  
D 530



### ORIGINAL standing mat

StandUp ORIGINAL is an PVC-free ergonomic, high quality and relieving standing mat. A desk mat with a textile surface in recycled PET. The surface layer is durable and dirt-resistant. Underside of polyurethane. Bevelled edge. Eyelet for hanging. Phthalate-free.

*Environment:* Shop, public environment, office.  
*Property:* Extra soft, cushioning.  
*Material:* Top PET fibre, bottom and core foamed polyurethane (PU).  
*Thickness:* 20 mm  
*Guarantee:* 5 year

Dimensions (mm)	Color	Art. no	Price
770 x 530 x 20	Grey	381990	149
770 x 530 x 20	Black	381991	149



H 16  
W 990  
D 530

H 16  
Ø560



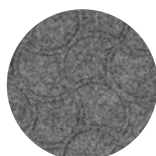
### ORIGINAL / ORIGINAL ROUND standing mat

StandUp ORIGINAL / ROUND is an ergonomic, high quality and relieving standing mat. A bigger and a smaller standing mat with a textile surface in recycled PET. Underside of nitrile rubber. Phthalate-free.

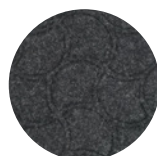
*Material:* Top PET fibre, bottom foamed nitrile rubber.  
*Thickness:* 16 mm

Dimensions (mm)	Color	Art. no	Price
Ø560 x 16	Grey	381892	138
990 x 530 x 16	Grey	381890	197

Options	Color	Art. no	Price
HOOK desk hook	Metal	382015	15

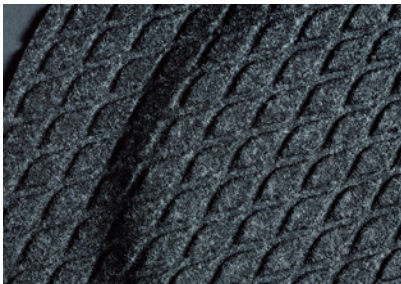
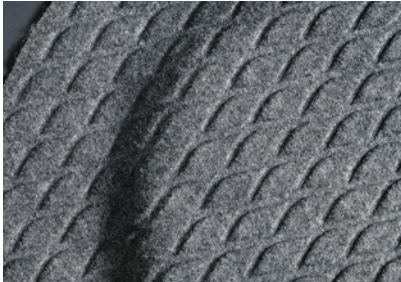


Grey



Black





H 16  
W 810/1470  
D 580/810



**YOGA FASHION standing mat**

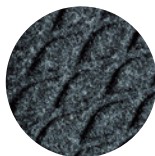
YOGA FASHION is an ergonomic standing mat. Textile surface made of recycled PET. The surface is durable and dirt-resistant. The desk mat has an underside of nitrile rubber. Bevelled edge. Phthalate-free.

*Environment:* Shop, public environment, office.  
*Property:* Very soft, cushioning, relieving.  
*Material:* Top PET fibre, bottom foamed nitrile rubber.  
*Thickness:* 16 mm  
*Guarantee:* 5 year

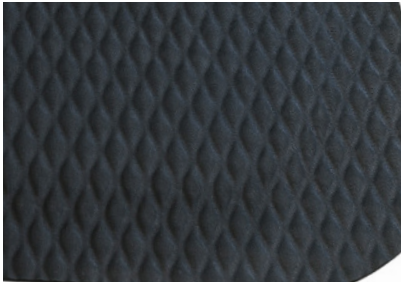
Dimensions (mm)	Color	Art. no	Price
810 x 580 x 16	Grey	381980	130
810 x 580 x 16	Black	381981	130
1470 x 810 x 16	Grey	384980	297
1470 x 810 x 16	Black	384981	297



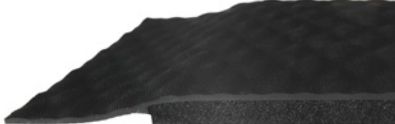
Grey



Black



H 16  
W 810/1470  
D 580/810



**YOGA FASHION NITRIL standing mat**

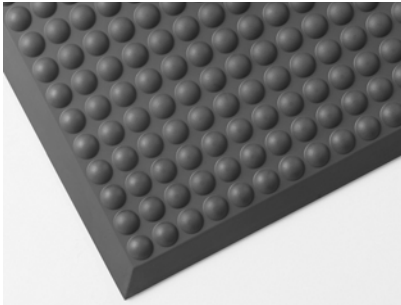
YOGA FASHION NITRIL is an ergonomic, relieving standing mat with a wipeable top side made of nitrile, 20% of which is recycled. The mat has an underside made of nitrile rubber. Bevelled edge. Phthalate-free.

- Environment:* Shop, public environment, office, heavy/light industry, welding.
- Property:* Soft, cushioning, relieving.
- Material:* Top nitrile rubber, bottom foamed nitrile rubber.
- Thickness:* 16 mm
- Oil resistance:* Long exposure.
- Guarantee:* 5 year

Dimensions (mm)	Color	Art. no	Price
810 x 580 x 16	Black	381970	126
1470 x 810 x 16	Black	381971	276



Black



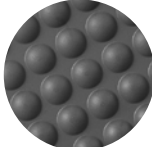
**YOGA PUR standing mat**

YOGA PUR is an ergonomic, relieving standing mat in PVC-free polyurethane. A workplace mat with a wipeable top surface with activating bumps that increase blood circulation. Bevelled edge. Phthalate-free.

*Environment:* Shop, public environment, office.  
*Property:* Soft, cushioning, springy.  
*Material:* Foamed polyurethane.  
*Thickness:* 13 mm  
*Guarantee:* 5 year

H 13  
 W 660/960  
 D 510/660

Dimensions (mm)	Color	Art. no	Price
660 x 510 x 13	Anthracite	118102	85
960 x 660 x 13	Anthracite	118100	168



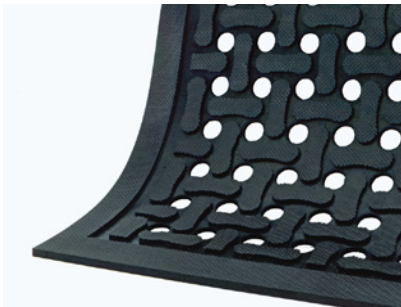
Anthracite







INDUSTRY  
FOOD HANDLING



H 12 mm  
B 85/83 cm  
D 56/140/277 cm

**COMFORT FLOW standing mat**

COMFORT FLOW is a PVC-free relieving standing mat. Made of nitrile rubber with a pattern that allows moisture to pass through and makes it non-slip. Bevelled edge reduces the risk of tripping.

- Environment:* Heavy industry, wet environments, food handling, welding, cutting fluids.
- Property:* Relief, non-slip.
- Material:* Nitrile rubber, antimicrobial treated.
- Thickness:* 12 mm
- Oil resistance:* Long exposure.
- Care:* Rinse or machine washable, can be disinfected with antiseptic chemicals. Can be autoclaved.
- Guarantee:* 5 year



Bottom side.

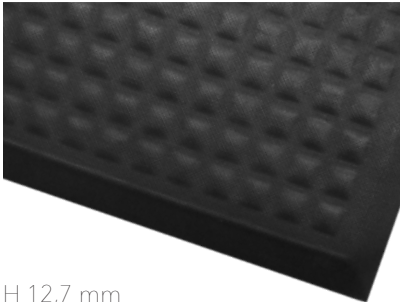
Dimensions (cm)	Format	Color	Art. no	Price
85 x 56 cm	Mat	Black	381105	111
83 x 140 cm	Mat	Black	381106	246
83 x 277 cm	Mat	Black	389500	517



Black



INDUSTRY  
FOOD HANDLING



H 12,7 mm  
W 90 cm  
D 60/150 cm



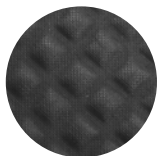
Bottom side.

**YOGA COMFORT standing mat**

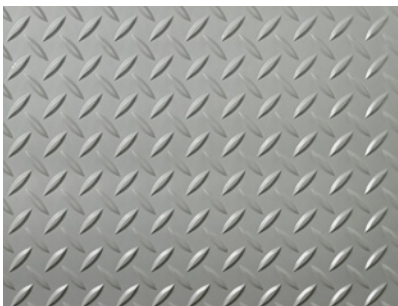
COMFORT FLOW is a PVC-free ergonomic standing mat that provides relief. Made of nitrile rubber, non-slip and antimicrobial treated to reduce bacterial growth. This makes the mat suitable for environments with high demands on hygiene and high wear. Bevelled edge.

- Environment:* Heavy industry, wet environments, hospitals, food, welding, cutting fluids.
- Property:* Relief, non-slip.
- Material:* Nitrile rubber, antimicrobial treated.
- Thickness:* 12,7 mm
- Oil resistance:* Long exposure.
- Care:* Rinse or machine washable, can be disinfected with antiseptic chemicals. Can be autoclaved.
- Guarantee:* 5 year

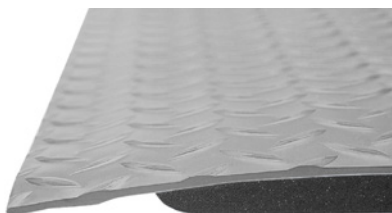
Dimensions (cm)	Format	Color	Art. no	Price
90 x 60 cm	Mat	Black	381115	162
90 x 150 cm	Mat	Black	381116	404



Black



H 13 mm  
W 61/91 cm  
L 12,2 m



### YOGA DECK workplace mat

YOGA DECK is a durable, ergonomic standing mat with a vinyl top layer and foamed vinyl underside. The deck plate patterned surface reduces the risk of slipping. Bevelled edge. Metre goods.

*Environment:* Shop, public environment, warehouse, light industry.  
*Property:* Soft, cushioning.  
*Material:* Top in vinyl and bottom in foamed vinyl.  
*Thickness:* 13 mm  
*Oil resistance:* Short exposure.  
*Guarantee:* 5 year

Dimensions (cm/m)	Format	Color	Art. no	Price
61 cm x 12,2 m	Roll	Grey	107909	1403
61 cm x m	Metre goods	Grey	107909-1	130
91 cm x 12,2 m	Roll	Grey	107911	2105
91 cm x m	Metre goods	Grey	107911-1	187

Maximum length: 12,2 m



Grey



H 16 mm      H 16 mm  
 W 91/152 cm    W 61/91/122 cm  
 D 61/91 cm      L 12,2 m

**YOGA DECK ZEDLAN standing/workplace mat**

YOGA DECK ZEDLAN is a durable and ergonomic standing mat. With a deck plate patterned wipeable surface layer. The mat has a Zedlan underside for extra comfort. Bevelled edge. Metre goods.

*Environment:* Shop, public environment, warehouse, light industry.  
*Property:* Soft, cushioning, very resilient.  
*Material:* Vinyl top and Zedlan™ foamed vinyl bottom.  
*Thickness:* 16 mm  
*Oil resistance:* Short exposure.  
*Guarantee:* 5 year

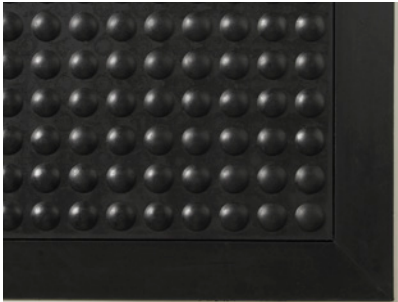
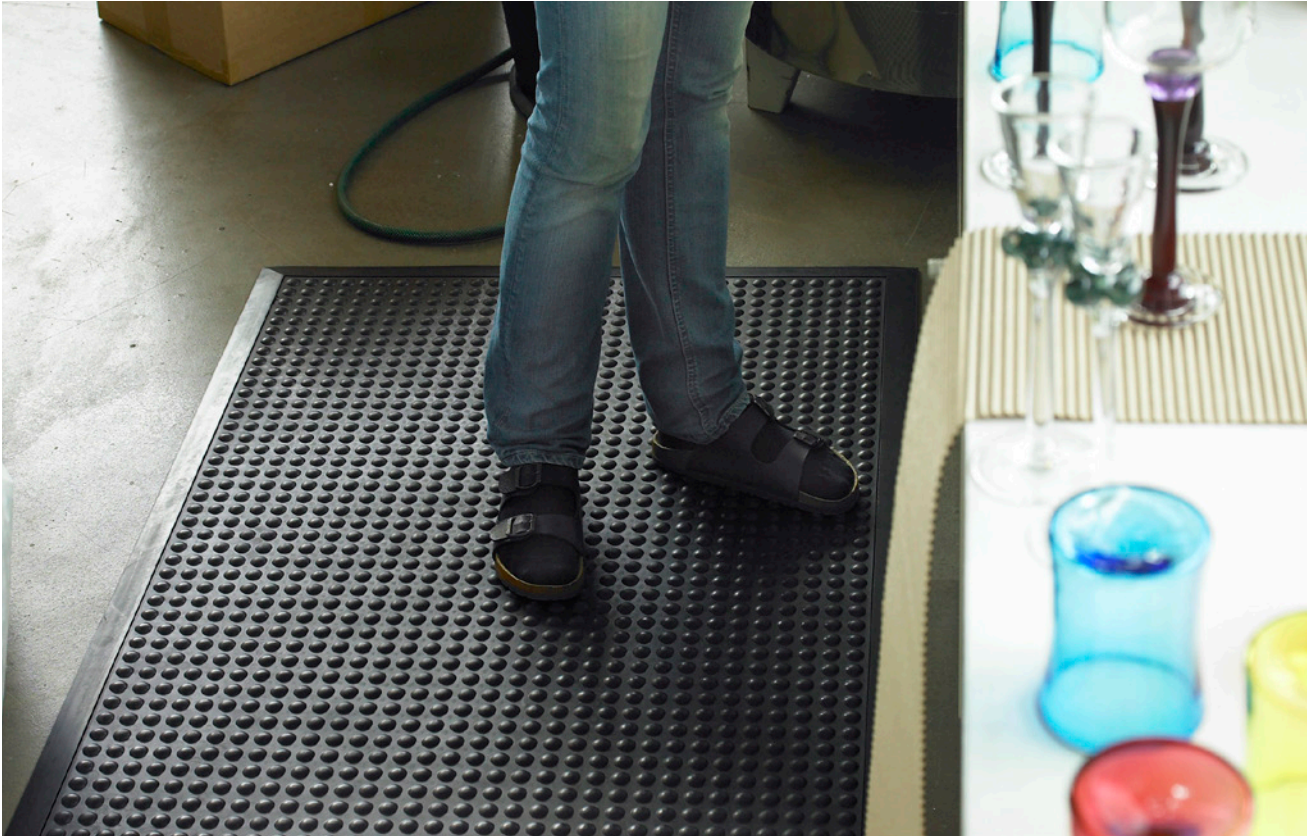


Dimensions (cm/m)	Format	Color	Art. no	Price
91 x 61 cm	Standing mat	Black	162918	141
91 x 152 cm	Standing mat	Black	192151	346
61 cm x 12,2 m	Roll	Black	108911	1 834
61 cm x m	Metre goods	Black	108911-1	164
91 cm x 12,2 m	Roll	Black	108910	2 717
91 cm x m	Metre goods	Black	108910-1	238
122 cm x 12,2 m	Roll	Black	108120	3 681
122 cm x m	Metre goods	Black	108120-1	316

Maximum length: 12,2 m



Black



H 15 mm  
W 90 cm  
D 120 cm



**YOGA BUBBLE standing mat**

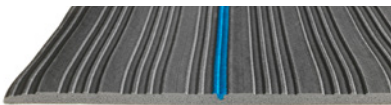
YOGA BUBBLE is a PVC-free relieving standing mat made of natural rubber. The activating bumps in the workplace mat increase circulation. Bevelled edge.

- Environment:* Warehouses, light industry.
- Property:* Soft, cushioning.
- Material:* Natural rubber.
- Thickness:* 15 mm
- Oil resistance:* Medium exposure.
- Guarantee:* 5 year

Dimensions (cm)	Format	Color	Art. no	Price
90 x 120 cm	Standing mat	Black	113800	133



Black



H 9 mm  
W 61/91/122 cm  
L 18,3 m

### YOGA METER workplace mat

YOGA METER is a relieving vinyl standing mat. Ribbed surface with a slightly bevelled edge on the long side. The blue colour line indicates that it is an original product. Metre goods.

*Environment:* Warehouses, light industry.  
*Property:* Soft, cushioning.  
*Material:* Vinyl.  
*Thickness:* 9 mm  
*Oil resistance:* Not suitable.  
*Guarantee:* 2 year

Dimensions (cm/m)	Format	Color	Art. no	Price
61 cm x 18,3 m	Roll	Grey	213822	582
61 cm x m	Metre goods	Grey	213822-1	45
91 cm x 18,3 m	Roll	Grey	213839	873
91 cm x m	Metre goods	Grey	213839-1	62
122 cm x 18,3 m	Roll	Grey	213846	1163
122 cm x m	Metre goods	Grey	213846-1	78



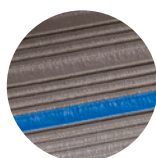
H 9 mm  
W 91 cm  
L 18,3 m

### YOGA SIGNAL workplace mat

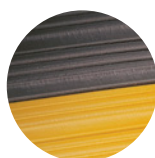
Similar to the YOGA METER but with a wide signal yellow warning/edge line.

Dimensions (cm/m)	Format	Color	Art. no	Price
91 cm x 18,3 m	Roll	Grey/yellow	243805	1009
91 cm x m	Metre goods	Grey/yellow	243805-1	69

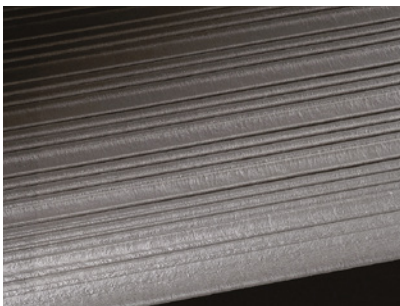
Maximum length: 18,3 m



Grey



Grey/yellow



H 9 mm  
W 61/91/122 cm  
L 18,3 m



### YOGA RETAIL workplace mat

YOGA RETAIL is a relieving standing mat in vinyl with a ribbed pattern and a slightly bevelled edge on the long side. Metre goods.

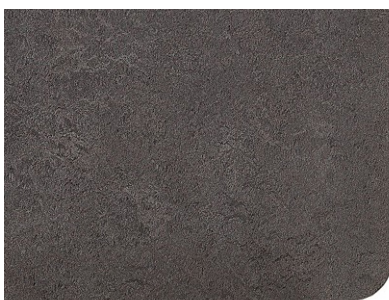
*Environment:* Warehouses, light industry.  
*Property:* Soft, cushioning.  
*Material:* Vinyl.  
*Thickness:* 9 mm  
*Oil resistance:* Not suitable.  
*Guarantee:* 2 year

Dimensions (cm/m)	Format	Color	Art. no	Price
61 cm x 18,3 m	Roll	Grey	213835	508
61 cm x m	Metre goods	Grey	213835-1	42
91 cm x 18,3 m	Roll	Grey	213840	757
91 cm x m	Metre goods	Grey	213840-1	56
122 cm x 18,3 m	Roll	Grey	213843	1 007
122 cm x m	Metre goods	Grey	213843-1	69

Maximum length: 18,3 m



Grey



H 14 mm      H 14 mm  
 W 91/152 cm    W 61/91/122 cm  
 D 61/91 cm      L 18,3 m



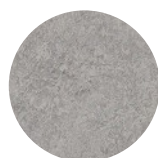
### YOGA STEP ZEDLAN standing/workplace mat

YOGA STEP ZEDLAN is a durable and ergonomic standing mat. Smooth wipe-able surface layer. Underside of Zedlan that gives the workplace mat extra comfort. Bevelled edge.

*Environment:* Shop, public environment, warehouse, light industry.  
*Property:* Soft, cushioning, resilient.  
*Material:* Top in vinyl and bottom in Zedlan™, foamed vinyl.  
*Thickness:* 14 mm  
*Oil resistance:* Short exposure.  
*Guarantee:* 5 year

Dimensions (cm/m)	Format	Color	Art. no	Price
91 x 61 cm	Standing mat	Lightgrey marble	119952	173
91 x 61 cm	Standing mat	Grey marble	119950	173
152 x 91 cm	Standing mat	Lightgrey marble	119953	426
152 x 91 cm	Standing mat	Grey marble	119951	426
61 cm x 12,2 m	Roll	Grey marble	119954	2 164
61 cm x m	Metre goods	Grey marble	119954-1	192
91 cm x 12,2 m	Roll	Grey marble	119955	3 245
91 cm x m	Metre goods	Grey marble	119955-1	282
122 cm x 12,2 m	Roll	Grey marble	119956	4 325
122 cm x m	Metre goods	Grey marble	119956-1	370

Maximum length: 12,2 m



Lightgrey marble



Grey marble





H 9 mm  
W 91/122 cm  
L 18,3 m

### YOGA SUPER workplace mat

YOGA SUPER is a relieving standing mat made of Zedlan. Maintains softness even with changes in temperature. Lightly patterned surface layer. Lightly bevelled edge on the long side. Metre goods.

*Environment:* Public environment, warehouses, light industry.  
*Property:* Soft, cushioning, resilient.  
*Material:* Zedlan, foamed vinyl.  
*Thickness:* 9 mm  
*Oil resistance:* Not suitable.  
*Guarantee:* 2 year.

Dimensions (cm/m)	Format	Color	Art. no	Price
91 cm x 18,3 m	Roll	Grey	213090	1 502
91 cm x m	Metre goods	Grey	213090-1	98
122 cm x 18,3 m	Roll	Grey	213120	2 004
122 cm x m	Metre goods	Grey	213120-1	125

Maximum length: 18,3 m



H 12 mm    H 12 mm  
W 91 cm    W 91 cm  
D 61 cm    L 18,3 m

### YOGA SUPER PLUS workplace mat

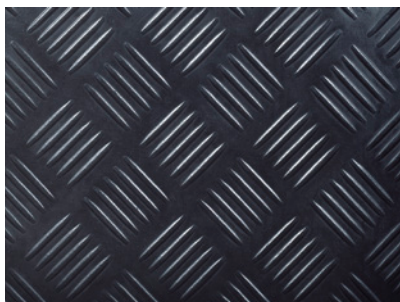
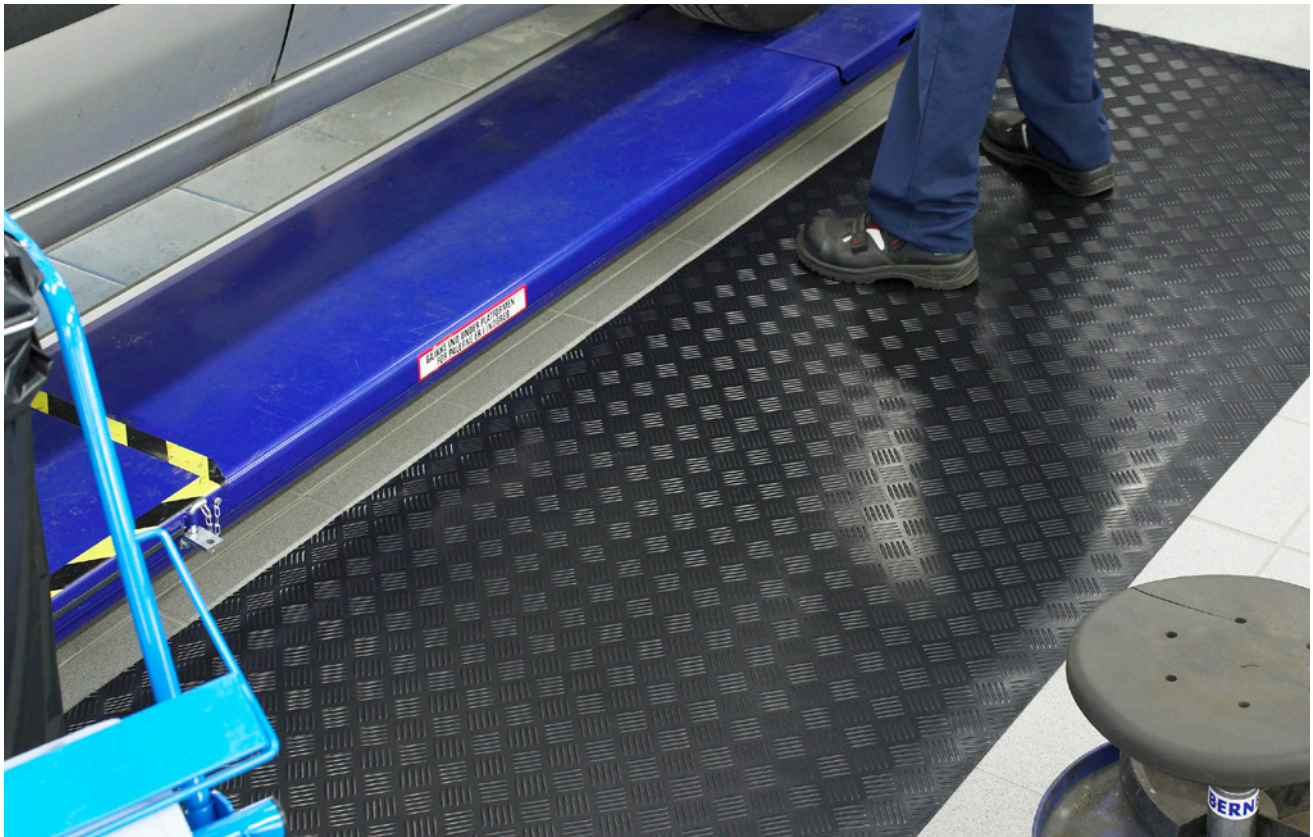
A thicker version of YOGA SUPER (12 mm) with the same characteristics and materials. Metre goods.

Dimensions (cm/m)	Format	Color	Art. no	Price
91 x 61 cm	Standing mat	Grey	214092	72
91 cm x 18,3 m	Roll	Grey	214199	2 167
91 cm x m	Metre goods	Grey	214199-1	133

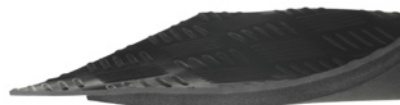
Maximum length: 18,3 m



Grey



H 11 mm  
W 60/100/140 cm



### YOGA TAILOR NITRIL workplace mat

YOGA TAILOR NITRIL is a PVC-free durable, relieving standing mat. A work mat with a deck plate patterned surface top side of nitrile rubber. Underside of EPDM rubber. Bevelled edge. Metre goods.

*Environment:* Shops, public spaces, warehouses, heavy/light industry.  
*Property:* Soft, cushioning, non-slip.  
*Material:* Top in nitrile rubber, bottom in EPDM rubber.  
*Thickness:* 11 mm  
*Oil resistance:* Long exposure.  
*Guarantee:* 5 year.

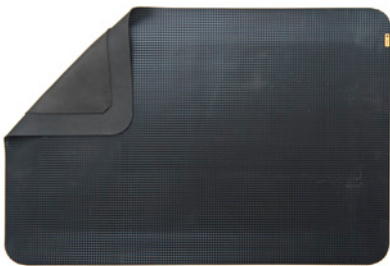
Dimensions (cm/m)	Format	Color	Art. no	Price
60 cm x m	Metre goods	Black	117120*	143
100 cm x m	Metre goods	Black	117121*	230
140 cm x m	Metre goods	Black	117122*	303
Customised dimensions	m <sup>2</sup>	Black	117123*	354

\* Procurement.

Maximum length: 20 m



Black

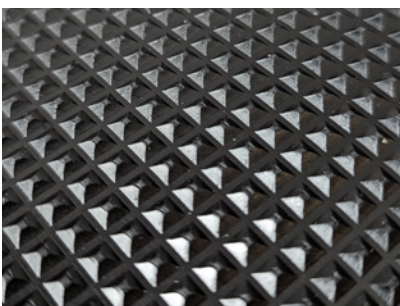


H 13 mm  
W 60/90/120 cm

### YOGA TAILOR PYR workplace mat

YOGA TAILOR PYR is a PVC-free durable, hard-wearing, relieving mat. A work mat with a pyramid patterned surface top side made of nitrile rubber. Under-side of EPDM rubber. For dry and harsh industrial environments where oil or water spills may occur. Silicone and latex free. Bevelled edge. Metre goods.

- Environment:* Light and heavy industry, welding, cutting fluids.
- Property:* Soft, cushioning, non-slip and anti-static.
- Material:* Top surface in nitrile rubber, backside in foamed EPDM rubber.
- Thickness:* 13 mm
- Oil resistance:* Long exposure.
- Temperature range:* -15°C to 120°C
- Fire classification:* Flame retardant, class B1 (top layer).
- Warranty:* 3 years

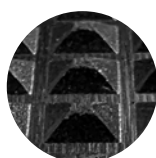


Surface layer with a pyramidal pattern.

Dimensions (cm/m)	Format	Color	Art. no	Price
60 cm x m	Metre goods	Black	117170*	150
90 cm x m	Metre goods	Black	117171*	341
120 cm x m	Metre goods	Black	117172*	389
Customised dimensions	m <sup>2</sup>	Black	117173*	298

\* Procurement.

Maximum length: 20 m



Black



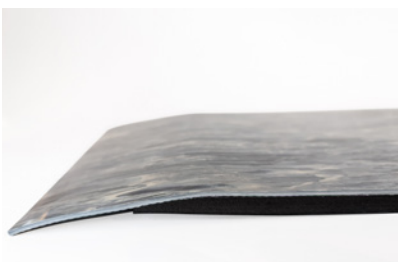


H 11 mm  
W 60/90/120 cm

### YOGA TAILOR STEP workplace mat

YOGA TAILOR STEP is a PVC-free durable and ergonomic standing mat. Smooth wipeable surface layer of natural rubber. The mat has an EPDM rubber backing. Bevelled edge. Metre goods.

*Environment:* Shop, public environment, warehouse, light industry.  
*Property:* Soft, cushioning.  
*Material:* Top in natural rubber, bottom in EPDM rubber.  
*Thickness:* 11 mm  
*Oil resistance:* Short exposure.  
*Guarantee:* 5 year.



Dimensions (cm/m)	Format	Color	Art. no	Price
60 cm x m	Metre goods	Grey marble	117144*	167
60 cm x m	Metre goods	Sand marble	117151*	167
90 cm x m	Metre goods	Grey marble	117145*	250
90 cm x m	Metre goods	Sand marble	117152*	250
120 cm x m	Metre goods	Grey marble	117146*	309
120 cm x m	Metre goods	Sand marble	117153*	309
Customised dimensions	m <sup>2</sup>	Grey marble	117148*	376
Customised dimensions	m <sup>2</sup>	Sand marble	117155*	376

\* Procurement Maximum length: 20 m



Grey marble



Sand marble





H 9 mm  
W 91 cm  
L 12,2 m



### YOGA TEX workplace mat

YOGA TEX is an PVC-free ergonomic standing mat with high durability for tough environments. Textured surface layer of SBR rubber and backing of natural rubber. Bevelled edge on long side. Metre goods.

*Environment:* Heavy/light industry, welding, cutting fluids.  
*Property:* Soft, cushioning, relieving pressure and non-slip.  
*Material:* Top in SBR rubber, bottom in foamed natural rubber.  
*Thickness:* 9 mm  
*Oil resistance:* Medium exposure.  
*Guarantee:* 5 year.

Dimensions (cm/m)	Format	Color	Art. no	Price
91 cm x 12,2 m	Roll	Black	107920	3 260
91 cm x m	Metre goods	Black	107920-1	283

Maximum length: 12,2 m



Black



H 13 mm  
W 91 cm  
L 18,3 m



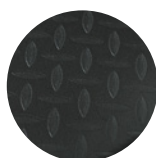
### YOGA WEARBOND workplace mat

YOGA WEARBOND is an ergonomic relief standing mat with a lightly patterned vinyl surface. Underside of vinyl foam. Bevelled edge. Metre goods.

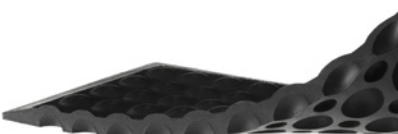
*Environment:* Shop, public environment, warehouse, light industry.  
*Property:* Soft, cushioning, relief.  
*Material:* Top in vinyl, bottom in foamed vinyl.  
*Thickness:* 13 mm  
*Oil resistance:* Not suitable.  
*Guarantee:* 2 year

Dimensions (cm/m)	Format	Color	Art. no	Price
91 cm x 18,3 m	Roll	Black	215030	1 873
91 cm x m	Metre goods	Black	215030-1	93

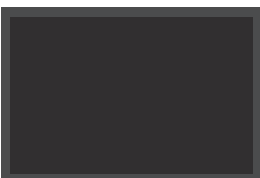
Maximum length: 18,3 m



Black



Bottom side.

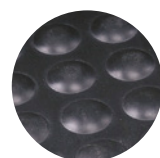


Mat  
H 13 mm  
W 90 cm  
D 60 cm



End piece   Center piece   End piece

H 13 mm  
W 80 cm  
D 70/30 cm



Black

### YOGA FLEX standing/module mat

YOGA FLEX is a PVC-free mat made entirely of natural rubber, making it a very soft and resilient mat. The suction cup pattern on the underside makes the mat lie still. Modular system consisting of centre pieces and end pieces that can be joined together to the desired length, it is also available as a complete mat in size 60 x 90 cm. Bevelled edges reduce the risk of tripping. YOGA FLEX is also ideal for low temperatures as the natural rubber retains its flexibility even in sub-zero temperatures. Bevelled edges.

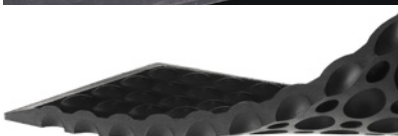
*Environment:* Shop, warehouses, light industry.  
*Property:* Soft, cushioning.  
*Material:* Natural rubber.  
*Thickness:* 13 mm  
*Oil resistance:* Short exposure.  
*Guarantee:* 5 year.

Dimensions (cm)	Format	Color	Art. no	Price
90 x 60 cm	Standing mat	Black	170224	70
80 x 70 cm	Center piece	Black	170211	70
80 x 30 cm	End piece	Black	170221	38



INDUSTRY

FOOD HANDLING

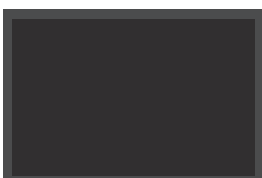


Bottom side.

### YOGA FLEX INDUSTRY standing/module mat

YOGA FLEX INDUSTRY is a PVC-free mat made from nitrile and natural rubber, the special dense rubber compound makes it difficult for bacteria to take hold. The nitrile rubber content allows it to withstand oils, grease and chemicals while giving the mat a high level of durability and heat resistance. Modular system consisting of centre pieces and end pieces that can be joined together to the desired length, it is also available as a complete mat in size 60 x 90 cm. Bevelled edges reduce the risk of tripping.

*Environment:* Heavy industry, oily environments. Food handling.  
*Property:* Soft, cushioning.  
*Material:* Mixture of nitrile and natural rubber.  
*Thickness:* 13 mm  
*Oil resistance:* Long exposure.  
*Guarantee:* 5 year.



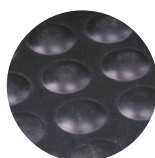
Mat  
 H 13 mm  
 W 90 cm  
 D 60 cm

Dimensions (cm)	Format	Color	Art. no	Price
90 x 60 cm	Standing mat	Black	170235	108
80 x 70 cm	Center piece	Black	170240	107
80 x 30 cm	End piece	Black	170230	54



End piece Center piece End piece

H 13 mm  
 W 80 cm  
 D 70/30 cm



Black





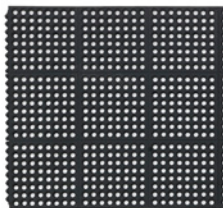
INDUSTRY

FOOD HANDLING



H 15 mm  
W 91 cm  
D 91 cm

Bottom side.



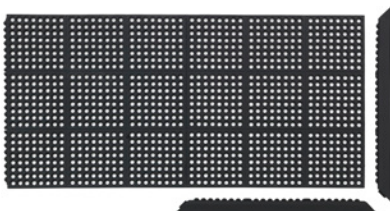
Module mat



Edge strip



Connector strip



Two mats with edge strips..

### YOGA TUFF EXTRA workplace/module mat

YOGA TUFF EXTRA is a PVC-free durable natural and nitrile rubber modular mat with an open hole pattern. Heat resistant and hard-wearing. Easy to rinse off. Can be supplemented with a bevelled edge.

*Environment:* Heavy industry, wet environments. Food handling. Good for covering large areas.

*Property:* Soft, cushioning, non-slip.

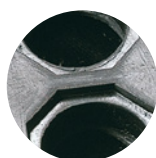
*Material:* Mixture of nitrile and natural rubber (25% and 75%).

*Thickness:* 15 mm

*Oil resistance:* Long exposure.

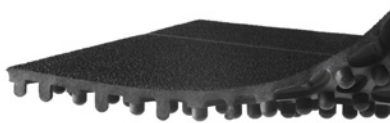
*Guarantee:* 5 year

Dimensions (cm)	Format	Color	Art. no	Price
91 x 91 cm	Module mat	Black	311642	89
6,5 x 91 cm	Edge strip	Black	331625	28
3,3 x 90,6 cm	Connector	Black	100245	15



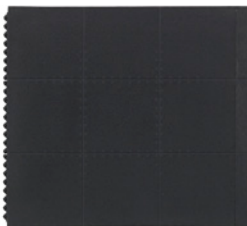
Black





Bottom side.

H 15 mm  
W 91 cm  
D 91 cm



Module mat



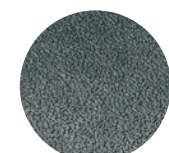
Edge strip



Connector strip



Two mats with edge strips..



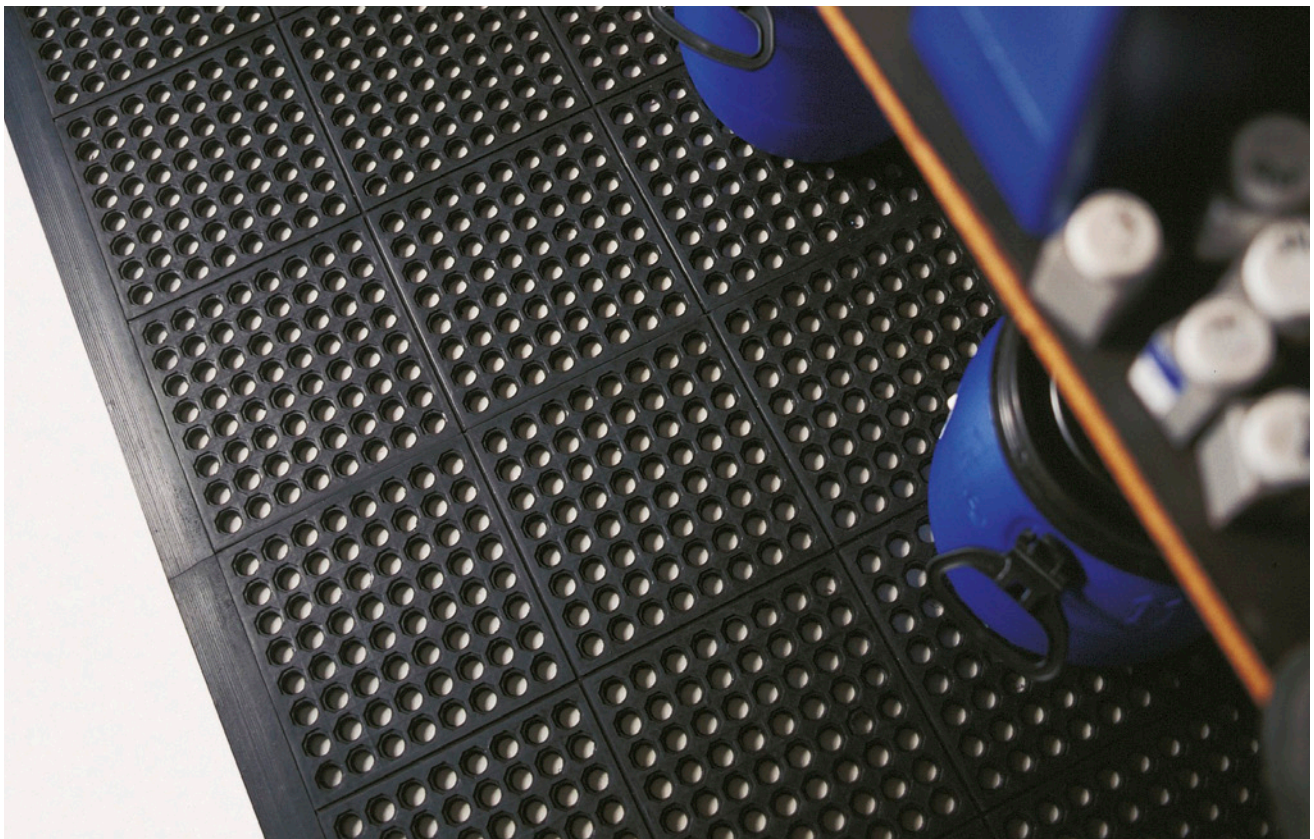
Black

### YOGA SOLID EXTRA workplace/module mat

YOGA SOLID EXTRA is a PVC-free durable modular mat with a dense and non-slip surface layer. Made of nitrile rubber. Heat resistant and hard-wearing. Easy to rinse off. Can be supplemented with a bevelled edge.

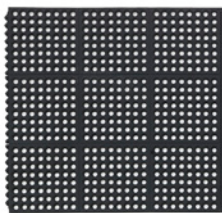
- Environment:* Heavy industry, foodhandling. Good for covering large areas. Withstands cutting fluids, oils, grease and chemicals.
- Property:* Soft, cushioning, non-slip.
- Material:* Nitrile rubber.
- Thickness:* 15 mm
- Oil resistance:* Long exposure.
- Guarantee:* 5 year

Dimensions (cm)	Format	Color	Art. no	Price
91 x 91 cm	Module mat	Black	321514	100
6,5 x 91 cm	Edge strip	Black	331625	28
3,3 x 90,6 cm	Connector	Black	100245	15



Bottom side.

H 15 mm  
W 91 cm  
D 91 cm



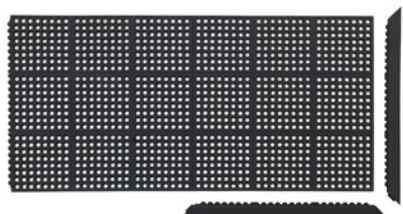
Module mat



Edge strip



Connector strip



Two mats with edge strips..

### YOGA TUFF workplace/module mat

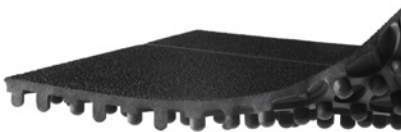
YOGA TUFF is a PVC-free durable modular mat with an open hole pattern. Made from natural rubber. Easy to rinse off. Can be extended in length and width and supplemented with a bevelled edge.

*Environment:* Light industry. Good for covering large areas.  
*Property:* Soft, cushioning, non-slip.  
*Material:* Natural rubber.  
*Thickness:* 15 mm  
*Oil resistance:* Short exposure.  
*Guarantee:* 5 year.

Dimensions (cm)	Format	Color	Art. no	Price
91 x 91 cm	Module mat	Black	331601	85
6,5 x 91 cm	Edge strip	Black	331625	28
3,3 x 90,6 cm	Connector	Black	100245	15



Black



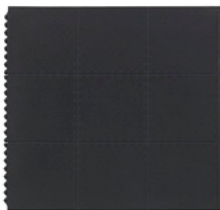
Bottom side.

H 15 mm  
W 91 cm  
D 91 cm

### YOGA SOLID workplace/module mat

YOGA SOLID a PVC-free modular mat with a dense and non-slip surface layer. Made of natural rubber. Easy to rinse off. Can be extended in length and width and complemented with a bevelled edge.

*Environment:* Warehouses, light industry. Good for covering large areas.  
*Property:* Soft, cushioning, non-slip.  
*Material:* Natural rubber.  
*Thickness:* 15 mm  
*Oil resistance:* Short exposure.  
*Guarantee:* 5 year.



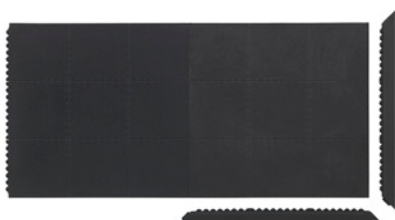
Module mat



Edge strip



Connector strip



Two mats with edge strips..



Black

Dimensions (cm)	Format	Color	Art. no	Price
91 x 91 cm	Module mat	Black	321503	84
6,5 x 91 cm	Edge strip	Black	331625	28
3,3 x 90,6 cm	Connector	Black	100245	15



H 58  
W 500  
D 344

### ACTIVE balance board

StandUp ACTIVE is a balance board for active standing and natural posture. ACTIVE balance board only tilts sideways - reducing the risk of tipping over on your heels. Natural poplar wood and cushioning PUR core. Eyelet for suspension.

Material: Polyurethane, poplar wood, PVC coating.

Dimensions (mm)	Color	Art. no	Price
500 x 344 x 58	Black / wood	551095	167



H 50  
W 500  
D 400



### ACTIVE balance mat

StandUp ACTIVE is a PVC-free balance mat in graphite gray with a soft, thick core that provides comfortable relief when standing up. Can be used with or without shoes. Easy to disinfect. Phthalate-free

Material: Polyurethane.

Dimensions (mm)	Color	Art. no	Price
500 x 400 x 50	Grey	551099	108



### HANGER floor stand

StandUp HANGER is a stylish floor stand with two side hangers. HANGER is designed to store StandUp products with the option of hanging. Made in Sweden from sustainable materials. Design by Dan Ihreborn.

Material: Metal (of which minimum 20% recycled), chrome.

Dimensions (mm)	Color	Art. no	Price
280 x 1070	Grey	562001	273
280 x 1070	Black	562000	273



### HANGER wall hook

StandUp HANGER wall hook for stylish storage. A high-quality hook for wall storage. Space for 5-6 workstation mats or 3-4 desk screens.

Material: Metal (of which minimum 20% recycled).

Dimensions (mm)	Color	Art. no	Price
80 x 120 x 157	White	562005	42
80 x 120 x 157	Grey	562006	42
80 x 120 x 157	Black	562007	42

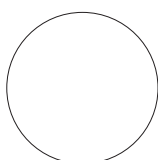


### HOOK desk hook

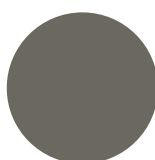
Desk hook, aluminium. Easy to hang on the desk edge, move and put away. Use for a workstation mat, balance plate, desk screen, bag or whatever you want to store close by.

Material: Metal, zinc.

Dimensions (mm)	Color	Art. no	Price
280 x 108	Metal	382015	15



White, RAL 9010



Grey, RAL 7039



Black, RAL 9005

## MATRIX ENVIRONMENTAL FACTS

PRODUCT	MÖBELFAKTA	SVANEN	DER BLAUE ENGELN	FSC	OKOTEX fabrics	EU ECO LABEL fabrics	GUT	RECYCLED MATERIAL	RoHS	PVC-FREE	FTALATE-FREE	REPLACEABLE LED lighting	CIRCULAR / SPARE PARTS	DISMANTLED	LCA - Life Cycle Analysis	EPD - Environmental Product Declaration
<b>WORKSTATION MATS</b>																
AIR workstation mat												x			x <sup>1)</sup>	
BRICK workstation mat								x		x					x <sup>1)</sup>	
CIRCLE workstation mat								x		x	x				x <sup>1)</sup>	
ORIGINAL workstation mat								x		x	x				x <sup>1)</sup>	
ORIGINAL / ROUND workstation mat								x			x				x <sup>1)</sup>	
CORK workstation mat										x	x				x <sup>1)</sup>	
EASY CLEAN workstation mat										x	x				x <sup>1)</sup>	
YOGA FASHION workstation mat								x			x				x <sup>1)</sup>	
YOGA FASHION NITRIL workstation mat								x			x				x <sup>1)</sup>	
YOGA PUR workstation mat										x	x				x <sup>1)</sup>	
COMFORT FLOW workstation mat										x						
YOGA COMFORT workstation mat											x					
YOGA BUBBLE workstation mat											x					
<b>WORKPLACE MATS</b>																
YOGA TAILOR NITRIL workplace mat											x					
YOGA TAILOR PYR workplace mat											x					
YOGA TAILOR STEP workplace mat											x					
YOGA TEX workplace mat											x					
YOGA FLEX workplace mat											x					
YOGA FLEX INDUSTRI workplace mat											x					
YOGA TUFF EXTRA workplace mat											x					
YOGA SOLID EXTRA workplace mat											x					
YOGA TUFF workplace mat											x					
YOGA SOLID workplace mat											x					
<b>STORAGE</b>																
HANGER golvstativ								x								
HANGER väggkrok								x								
<b>BALANCE MAT</b>																
ACTIVE balance mat										x	x					

1) LCA calculations in progress. Reports ready Q1 2024.

# Which mat should I choose?

Mat	Shop, pub.envir., office	Warehouse	Light industry	Heavy industry	Oil-resistant	Welding	Wet environment	Food handling	Thickness	Mat size	Constructable / module size	Roll size
StandUp AIR	X	X	X	X	Long	X			19 mm	77 x 53 cm 99 x 53 cm		
StandUp BRICK	X				-				16 mm	78 x 54 cm		
StandUp CIRCLE	X				-				20 mm	77 x 53 cm		
StandUp CORK	X				-				22 mm	77 x 53 cm		
StandUp EASY CLEAN	X				-				18 mm 22 mm	60 x 52 cm 77 x 53 cm		
StandUp ORIGINAL	X				-				20 mm 16 mm	77 x 53 cm 99 x 53 cm Ø 56 cm		
YOGA FASHION	X				-				16 mm	81 x 58 cm 147 x 81 cm		
COMFORT FLOW	X	X	X	X	Long	X	X	X	12 mm	85 x 56 cm 83 x 140 cm 83 x 277 cm		
YOGA COMFORT	X	X	X	X	Long	X	X	X	12,7 mm	90 x 60 cm 90 x 150 cm		
YOGA BUBBLE		X	X		Medium				15 mm	90 x 120 cm		
YOGA DECK	X	X	X		Short				13 mm			0,61 x 12,2 m 0,91 x 12,2 m
YOGA DECK ZEDLAN	X	X	X		Short				16 mm	91 x 61 cm 91 x 152 cm		0,61 x 12,2 m 0,91 x 12,2 m 1,2 x 12,2 m
YOGA FASHION NITRIL	X	X	X	X	Long	X			16 mm	81 x 58 cm 147 x 81 cm		
YOGA FLEX	X	X	X		Short				13 mm	90 x 60 cm	End piece 80 x 30 cm Center piece 80 x 70 cm	
YOGA FLEX INDUSTRY				X	Long	X	X	X	13 mm	90 x 60 cm	End piece 80 x 30 cm Center piece 80 x 70 cm	
YOGA METER	X	X	X		-				9 mm			0,61 x 18,3 m 0,91 x 18,3 m 1,22 x 18,3 m
YOGA METER SIGNAL	X	X	X		-				9 mm			0,91 x 18,3 m
YOGA PUR	X	X	X		-				13 mm	66 x 51 cm 96 x 66 cm		
YOGA STEP ZEDLAN	X	X	X		Short				14 mm	91 x 61 cm 91 x 152 cm		0,61 x 12,2 m 0,91 x 12,2 m 1,22 x 12,2 m
YOGA SUPER	X	X	X		-				9 mm			0,91 x 18,3 m 1,22 x 18,3 m
YOGA SUPER PLUS	X	X	X		-				12 mm	91 x 61 cm		0,91 x 18,3 m
YOGA SOLID		X	X		Short		X		15 mm		91 x 91 cm	
YOGA SOLID EXTRA				X	Long		X	X	15 mm		91 x 91 cm	
YOGA TAILOR NITRIL	X	X	X	X	Long				11 mm			0,6 x m 1,0 x m 1,4 x m Custom. dim.
YOGA TAILOR PYR			X	X	Long	X	X		13 mm			0,6 x m 0,9 x m 1,2 x m Custom. dim.
YOGA TAILOR STEP	X	X	X		Short				11 mm			0,6 x m 0,9 x m 1,2 x m Custom. dim.
YOGA TEX			X	X	Medium	X			9 mm			0,91 x 12,2 m
YOGA TUFF		X	X		Short		X		15 mm		91 x 91 cm	
YOGA TUFF EXTRA				X	Long		X	X	15 mm		91 x 91 cm	
YOGA WEARBOND	X	X	X		-				13 mm			0,9 x 18,3 m